

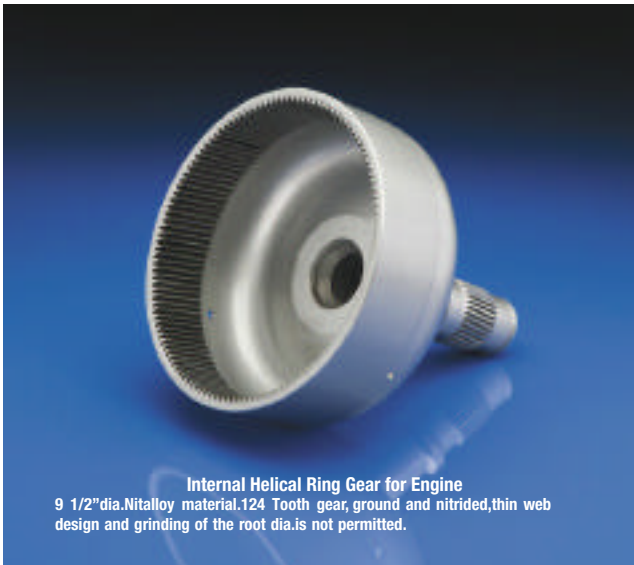
Pinion-Output Gear

6 1/2" dia. bar stock. Held within +/- .0002 gear positions, 6 module pitch, 15 teeth, carburized and silver plated.



Engine Output Shaft

3" dia. bar stock. Two internal carburized and ground splines. Pitch line concentricities held within .001, shot peen, chrome & silver plated and black oxide.



Internal Helical Ring Gear for Engine

9 1/2" dia. Nit alloy material. 124 Tooth gear, ground and nitrided, thin web design and grinding of the root dia. is not permitted.



Double Helical Gear - Engine Input Reduction Gearbox

Gear teeth are held within .0001 involute tolerance. Carburized and ground with a 8 RMS on the Pitch diameters and a 16 RMS on the journal diameters.



Internal Spur Gear - Helicopter Main Gearbox

12 1/2 " dia., 120 holes held within .0005, 177 teeth ground within .004 M.B.W., concentricities held within .0005, carburized and die quenched and silver plated.



Elongated High Speed Shaft for Engines

Inconel 718 triple melt material, 4" dia x 42" long with .090 wall thicknesses. Mechanically stretched .090 and then ground to within +/- .0002 on the diameters. Dynamically balanced, heat treat, FPI, chrome and silver plated. Runs at 25,000 RPM.

